



Industrial farming *pollution and animal rights*

Emma GUIBADO

Amandine ALAIS

Camille ROUX DE REILHAC

Historical analysis

Early 1900s: half of the population lived in rural areas

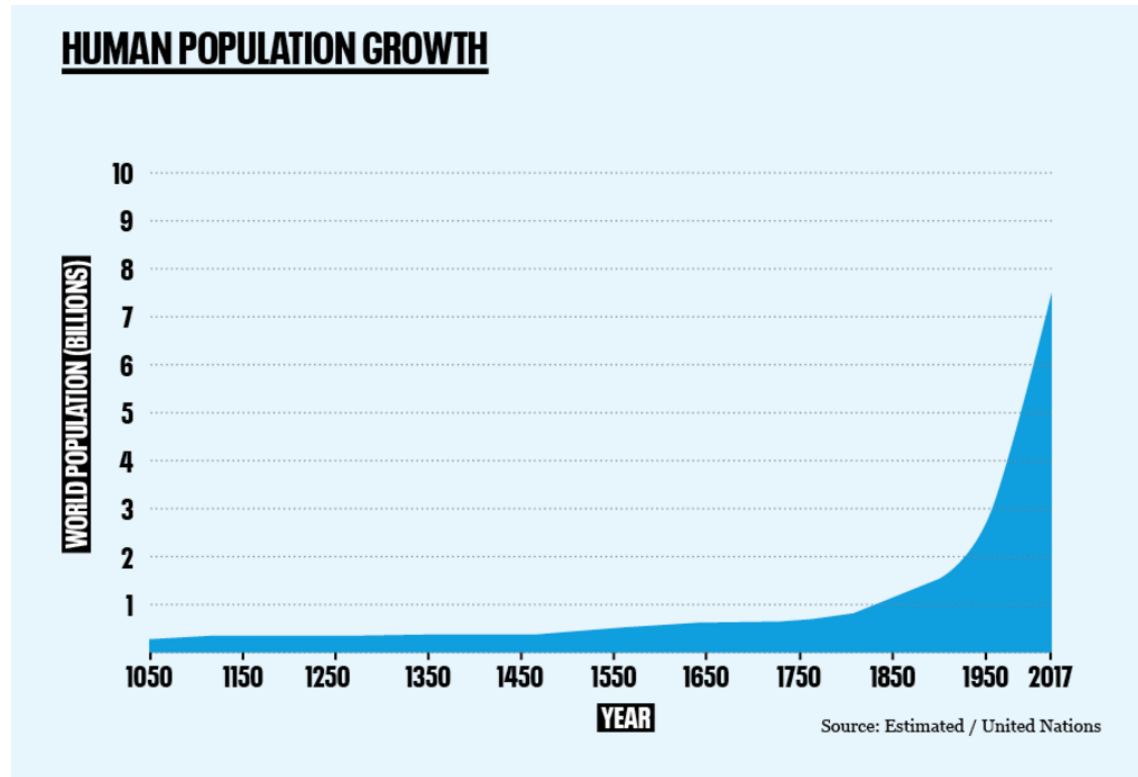
Farmers had diversified activities

They used their own force and animal labor to work.

Animals were roaming freely.



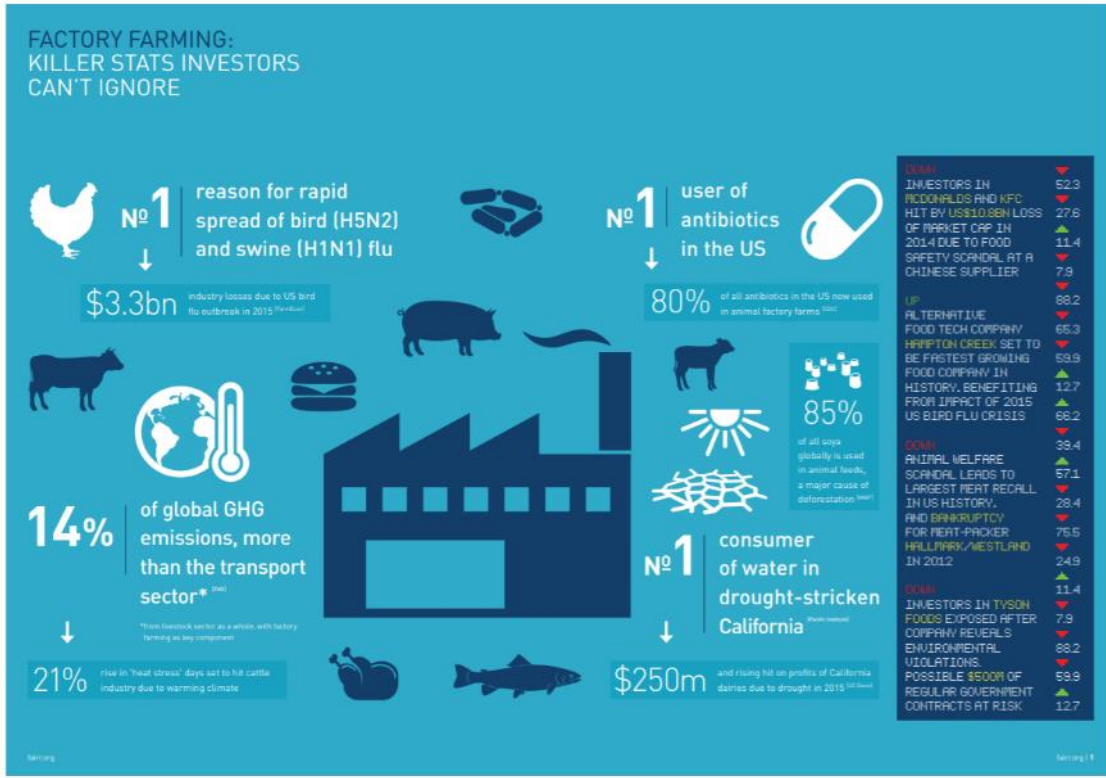
Historical analysis



20th century: Industrial Revolution.

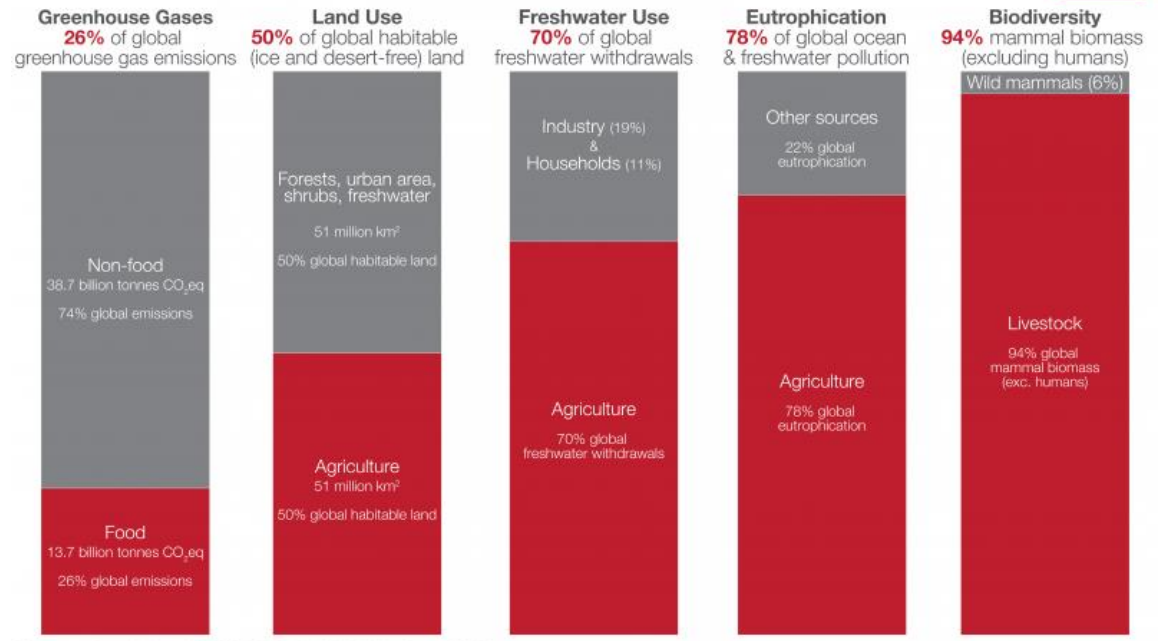
- In 1909, synthetic fertilizer
- Discovery of new energies: new machines
- Specializing in one field
- 1923: commercialization of all-purpose tractors
- Irrigation: possible to bring water to roots in gigantic fields
- Late 1920s: large-scale farms
- After World War II: rise to synthetic pesticides
- Development of infrastructures and transportation
- Animals are treated like production units instead of sentient creatures

Main data



What are the environmental impacts of food and agriculture?

Our World in Data

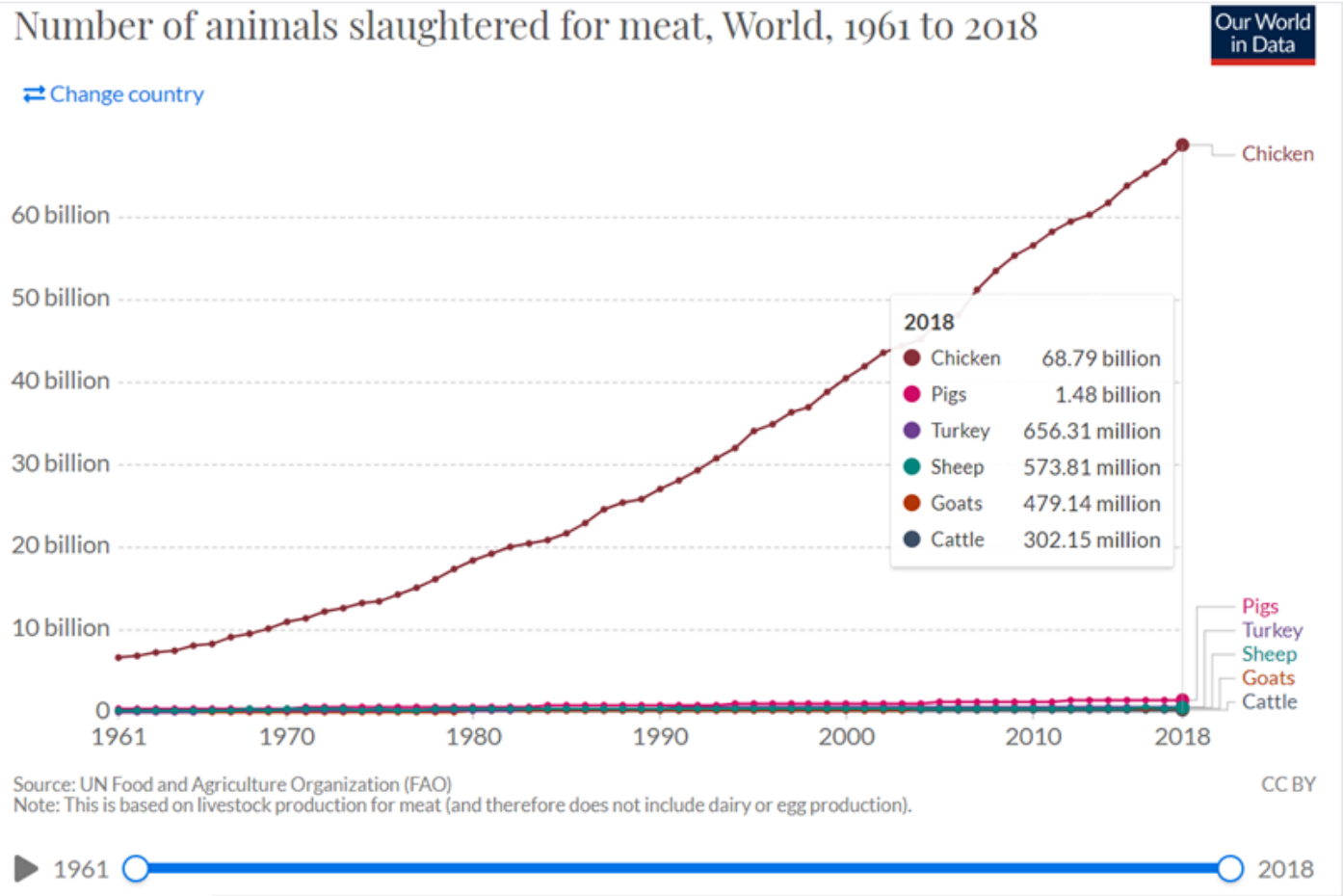


Data sources: Poore & Nemecek (2018); UN FAO; UN AQUASTAT; Bar-On et al. (2018).

OurWorldinData.org - Research and data to make progress against the world's largest problems.

Licensed under CC-BY by the author Hannah Ritchie.

Main data



How/ what is concerned



ANIMALS FARMING

- Impact on animal welfare
 - Subjected to constant stress,
 - New diseases transmissible to humans
 - Excessive use of antibiotics
 - Shortened animal lifespan
- Impact on our health
 - Poor antimicrobial resistance in the body
- Impact on the environment
 - A type of agriculture that generates a lot of waste.
 - Main cause of water wastage
 - Loss of biodiversity

How/ what is concerned

AGRICULTURAL FARMING

- Pollution of drinking water and oceans
 - impact on the underwater fauna
 - too rich in nitrate, has harmful because of pesticides and fertilizer
- The health of producers and consumers
 - Pesticides contains chemical molecules
 - Contracting chronic diseases
- Impact on the biodiversity
 - Kills the surrounding flora and fauna

