

# EUROPEAN ECONOMICS

## ESSCAland & Our Fuel policy How does it work?

By

Sarah BITEAU, Laure TOUCHARD, Camille GIROUX  
(French)

# SUMMARY

## **I- How does it work?**

## **II- Consequences**

- a. Economic
- b. Political
- c. Social
- d. Environmental

## **III- EsscaLand**

- a. Presentation of the project
- b. Presentation of the infrastructures
- c. Advantages for the population

## I- HOW DOES IT WORK?

Before the fuel arrives at the pump, several stages are necessary and have a cost:

- The exploitation of crude oil
- Selling the crude oil on international markets
- the transformation of crude oil into fuel
- storage, transport and distribution to stations



# WHAT IS THE CURRENT FUEL TAXATION?

Taxes represent 60% of the consumer price :

VAT



Its rate is 20% on fuels in mainland France.

It also applies to the TICPE (The domestic consumption tax on energy products)

Represents about 40% of the pump price

## II) CONSEQUENCES

Social

Economic

Environmental

Politic



# SOCIAL

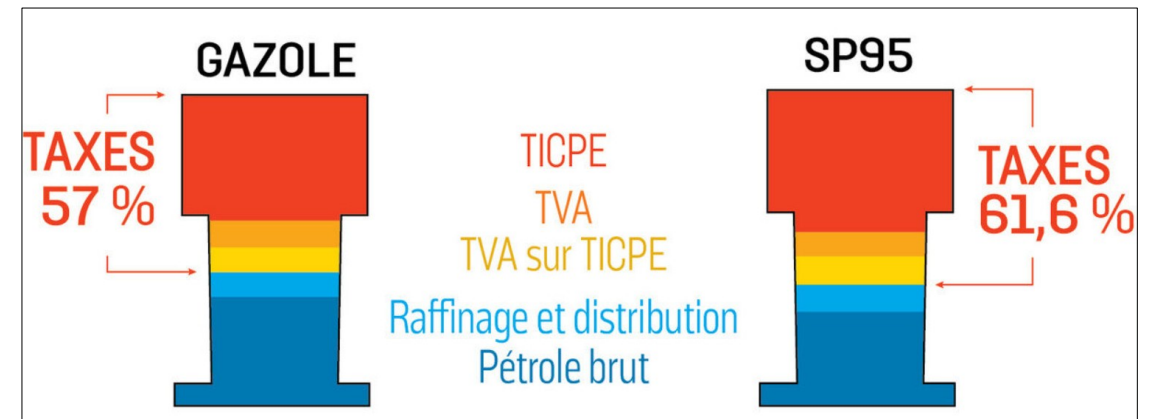
The increase in fuel taxation is at the origin of "La mouvement des gilets jaunes", a national mobilization that took place on November 17.

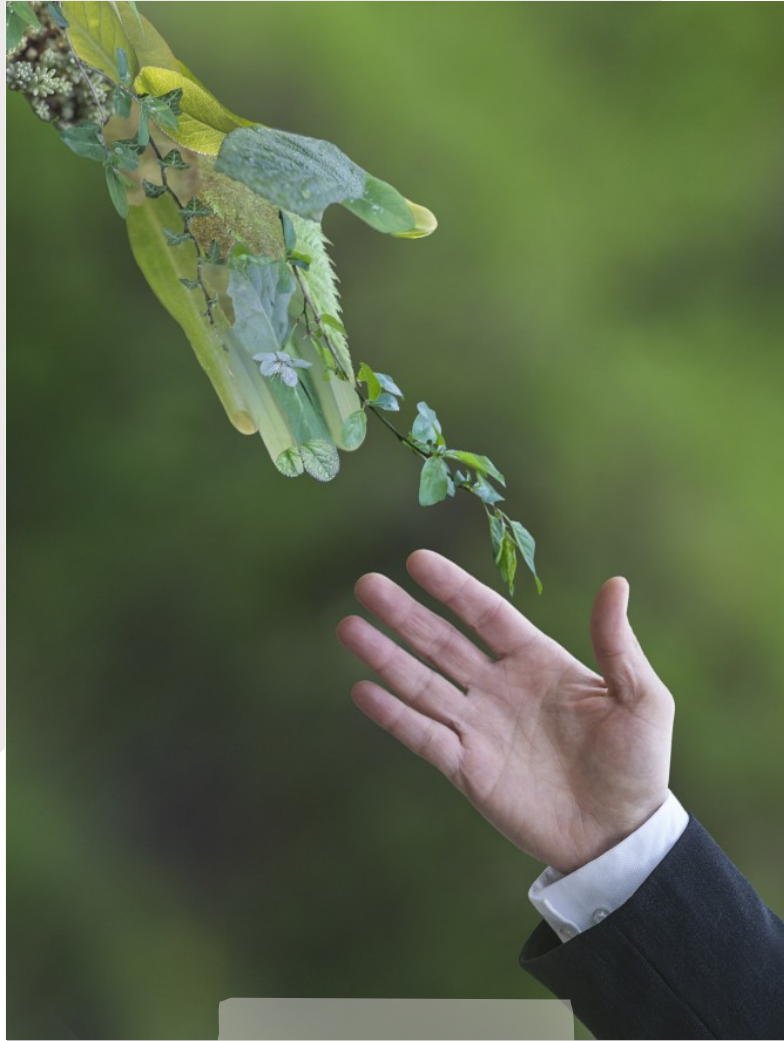


# ECONOMIC

This tax has three main economic purposes for the government.

- 1) The State budget
- 2) The transfer of competences from the State to the regions and departments
- 3) The development of transport infrastructures and the promotion of "green energy".





# ENVIRONMENTAL

Several environmental taxes have proven their effectiveness. In particular:

- Taxes on fossil fuel consumption
- Since 2014, a policy of tax



# POLITIC

It leads to differences of opinion between the different political parties:



Some politicians want to encourage car use by reducing the tax.

On the contrary, some (such as the green parties) want to make fossil fuels more expensive for consumers.

### III) ESSCALAND





CAR



# TRAINS







AIR FLIGHTS





TRUCKS



# PRESENTATION OF OUR INFRASTRUCTURES



- Build parking outside the cities
- Make the train a public service
- Develop the bicycle and scooter network
- Favor rail freight over trucks
- Set up a network of electric buses
- Introduce a tax for domestic flights

### III) ADVANTAGES FOR THE POPULATION

- A fairer system
- An economically sustainable model
- An environmentally friendly model
- A safer model



THANK YOU 😊